



The Dawn of a New Era

Do More With Broadband

Devin Cox

June 19, 2018



Communication is not just a sector of the economy. Communication **is** the economy.

– Kevin Kelly, *New Rules to a New Economy*

Subscribers



Incumbents

- ➔ Subscriber Pays
- ➔ ISP Has Control
- ➔ Misaligned Interests
- ➔ No Competition
- ➔ Throttled Innovation
- ➔ Scarce Bandwidth
- ➔ Inflated Prices
- ➔ Permission Required

Separate Infrastructure from Services

Municipal Infrastructure



Open Broadband Networks
or Broadband as a Utility

Incumbent Infrastructure



Closed Broadband Networks



Municipal Broadband Value Proposition

The Unique Value Proposition of Municipal Networks...

Create Local Control and Ownership of Network Infrastructure

Municipalities should own and control
broadband infrastructure.

The Private Sector should provide services
running over that infrastructure.

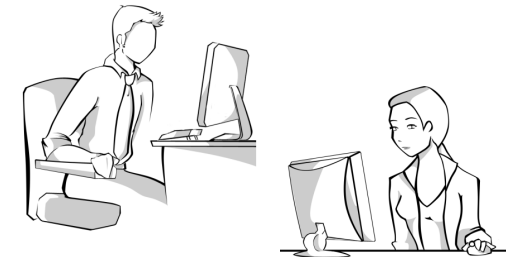
Guiding Premise



Network Operators
Service Providers

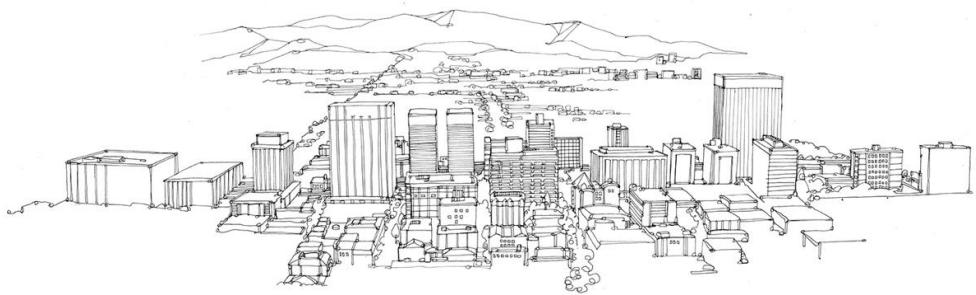


Who Should
Networks
Serve?



Subscribers

Guiding Premise



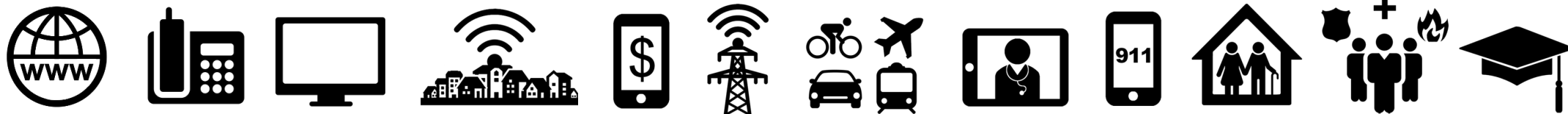
Network Operators

Who Should
Networks
Serve?

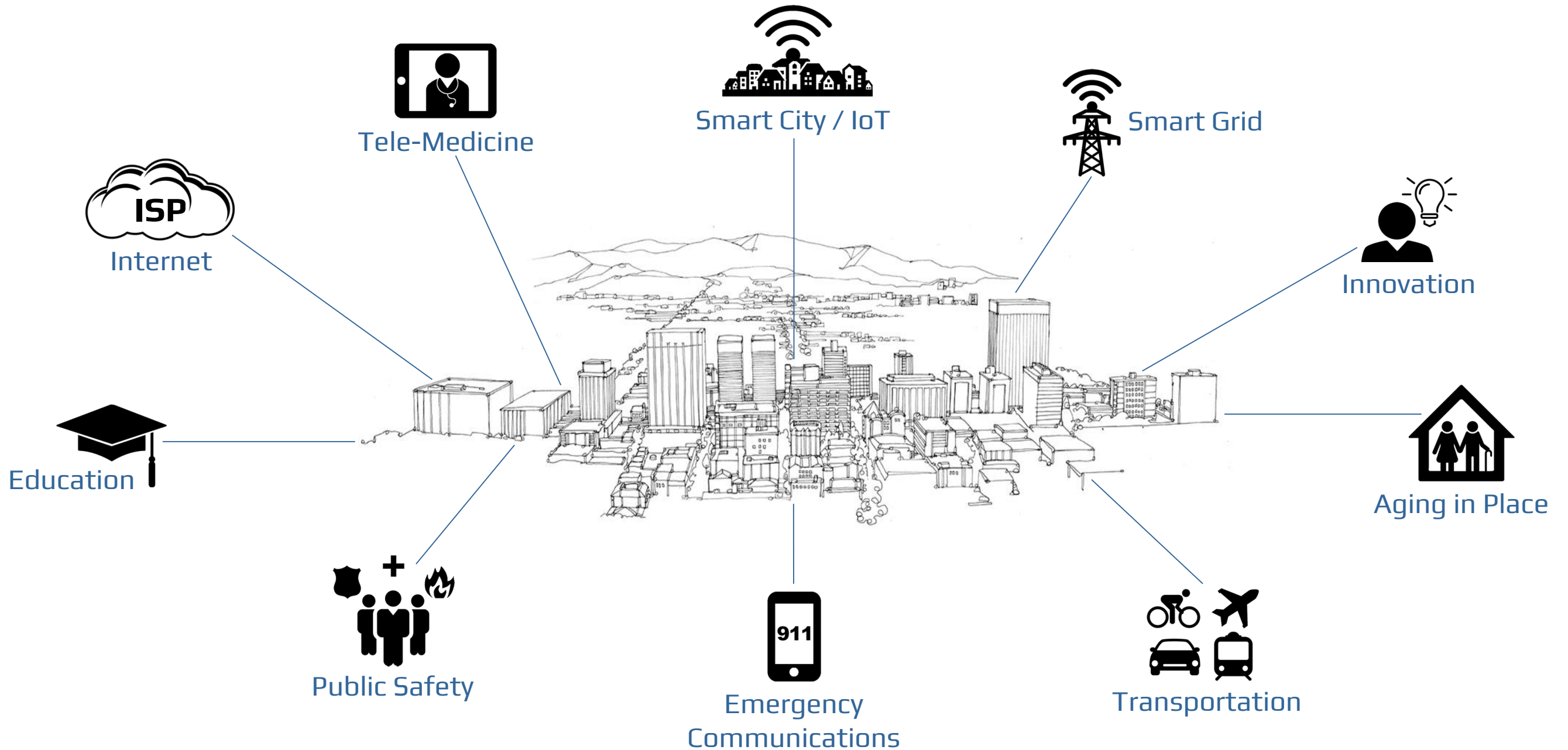


Subscribers

Service Providers



Municipal Network of the Future



A Platform of Possibility



Efficient Government



Economic Development



Education



Smart Grid



Transportation



Smart City / IoT



Livability



Public Safety



Innovation



Affordable Communications



Tele-Medicine



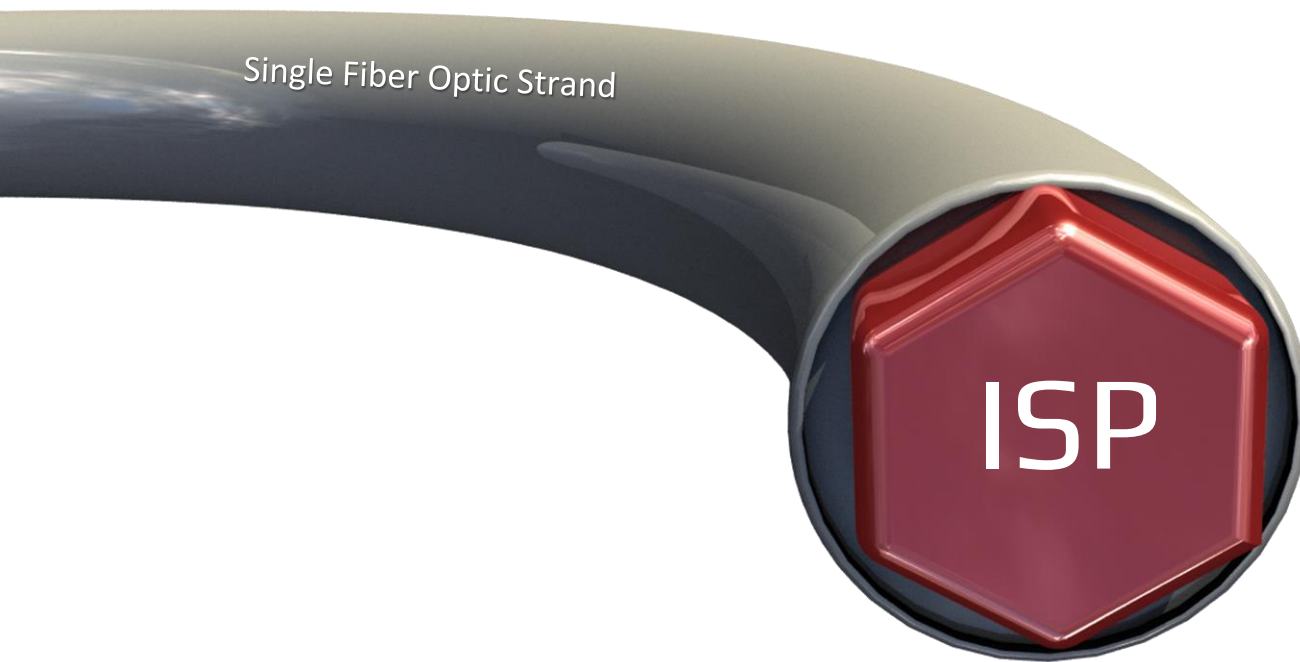
Emergency Communications



Aging in Place

Fast Internet

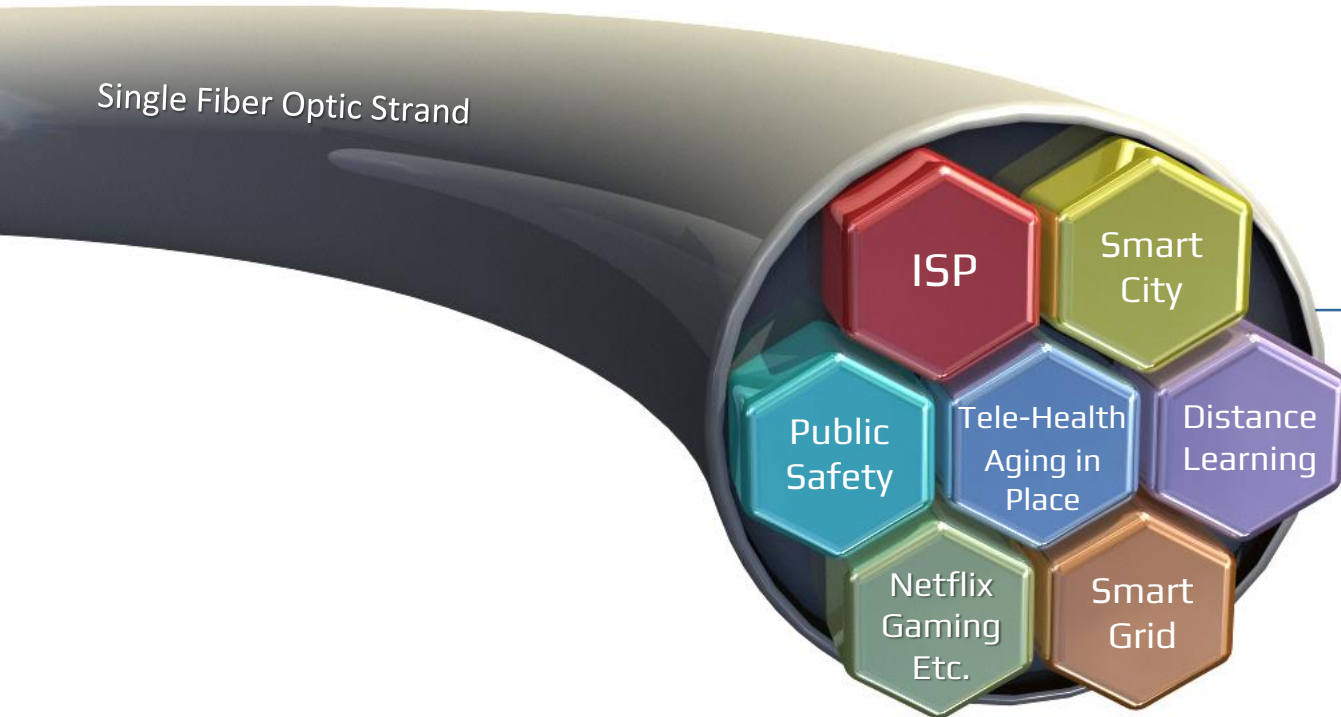
Traditional Broadband Closed Network



Illustrated cross-cut of a single fiber strand containing a traditional ISP Network and Service.

The Power of Virtualization

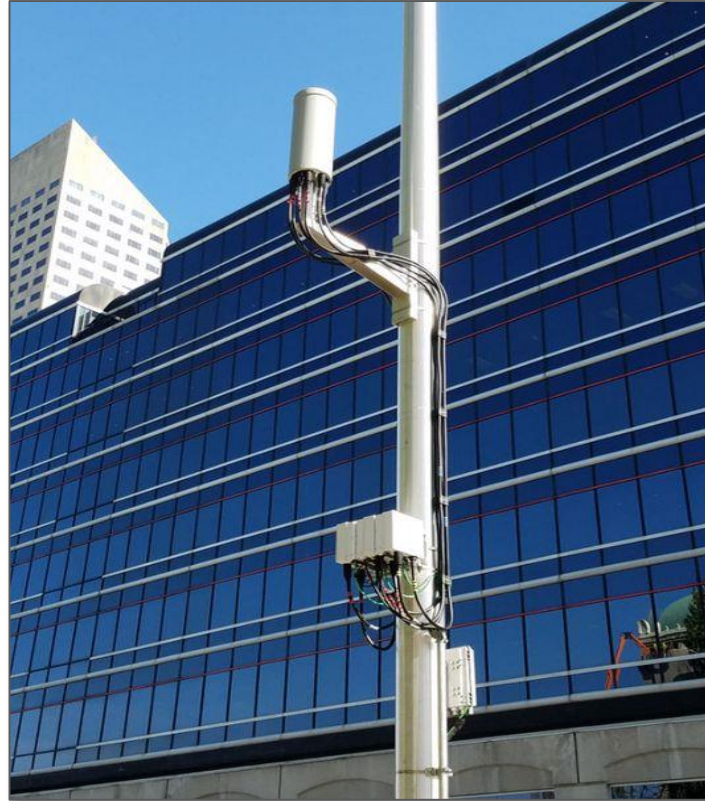
Multiple Virtual Private Networks for Off-Internet Services Requiring Greater Privacy, Security, and Reliability



Illustrated cross-cut of a single fiber strand containing multiple virtual private networks.

“We are at the dawn of a new era: Software Defined Infrastructure; a starting point of a very deep revolution that will reshape our global computing infrastructure. Today’s internet will run in just one “slice” across this infrastructure, with many other novel services populating other slices.”

– National Science Foundation - February 2016, Workshop



Wireless works best the faster it gets back to fiber

Power of Abundant Bandwidth



Scarcity



Abundance

Abundant Bandwidth Leads to Flourishing
Economic Growth – Innovation – New Applications



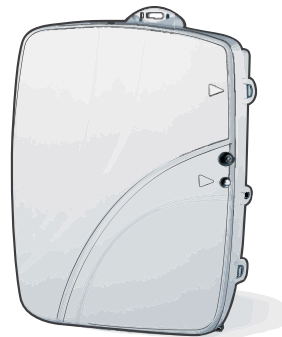
FlowOps™ Network Management

- Advanced Network Orchestration
- Cloud Functionality at Subscriber Edge
- Network Management Automation
- Rapid and Easy Deployment of Services
- Enables On-Demand Services



FlowOps™ Authentication

- Authenticates any Device Connected to the Network
- Prevents Unauthorized Devices from Using Network Resources
- Isolates Rogue Devices



Virtual Broadband Gateway

- Supports Multiple Service Providers
- Enables Automated Self-Provisioning
- Multi-Processors with Virtual Machines
- SDN/OpenFlow Capable
- Enables Service Chaining and Containers

- 1 Separation of Infrastructure and Services**
Putting Service Providers in Cloud
- 2 Network Automation**
Network Provisioning and Management
- 3 Network Virtualization**
Multiple Private Networks Over A Single Fiber Connection



How To Finance The Network

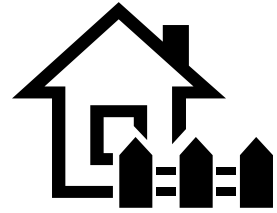
Funding should come from the property owners who sign-up voluntarily

Residents voluntarily “Opt-In” to the Broadband Improvement District

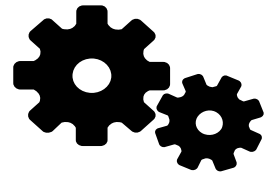
Makes Subscriber's **Owners** not Renters



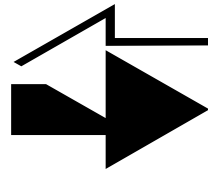
Three Cost Categories for Subscribers



Infrastructure Expense



Monthly Maintenance & Operations

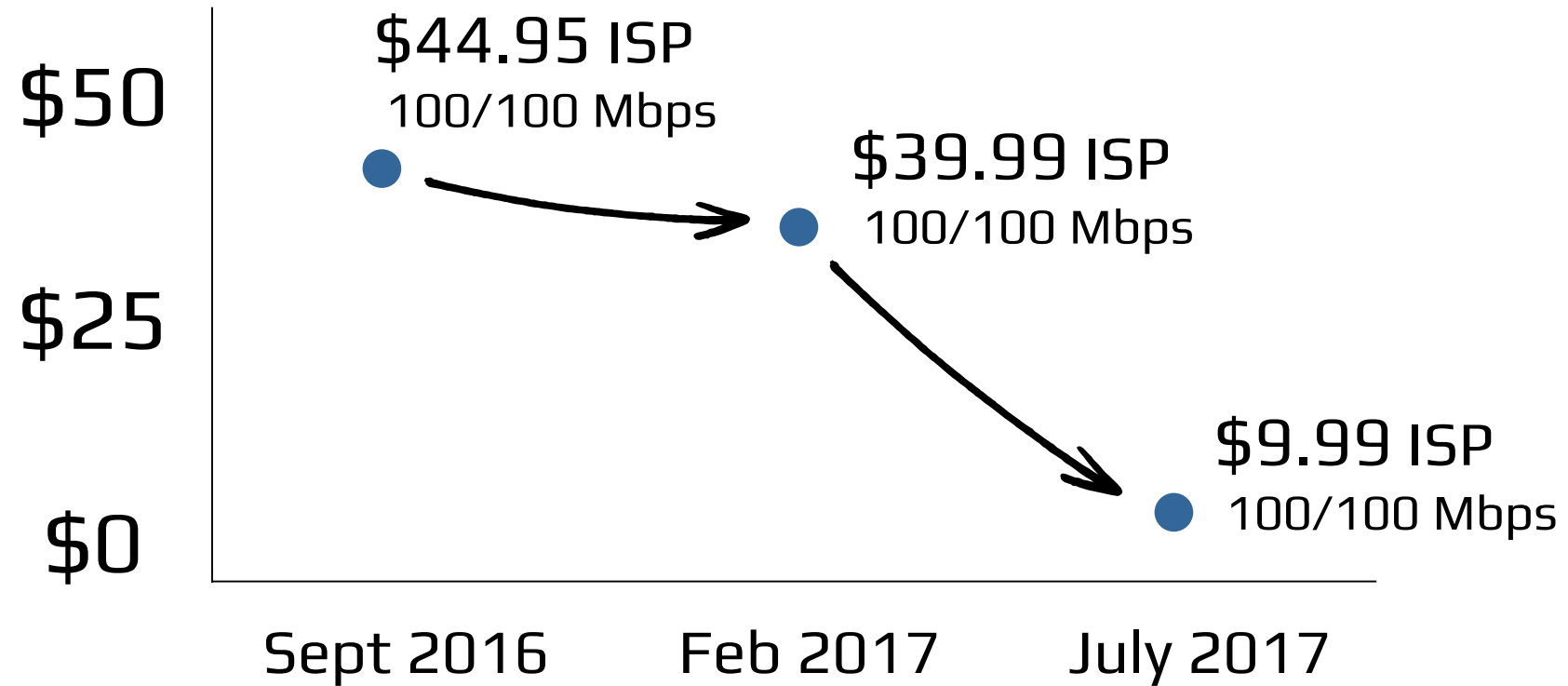


WWW

ISP Internet Services



True ISP Competition in Ammon, Idaho

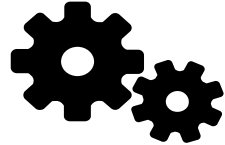


Three Cost Categories in Ammon, Idaho



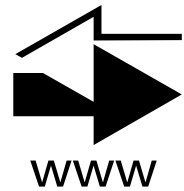
Monthly Infrastructure Expense

\$17.00



Monthly Maintenance & Operations

\$16.50



Best Monthly ISP Value Currently (100/100 Mbps)

\$9.99

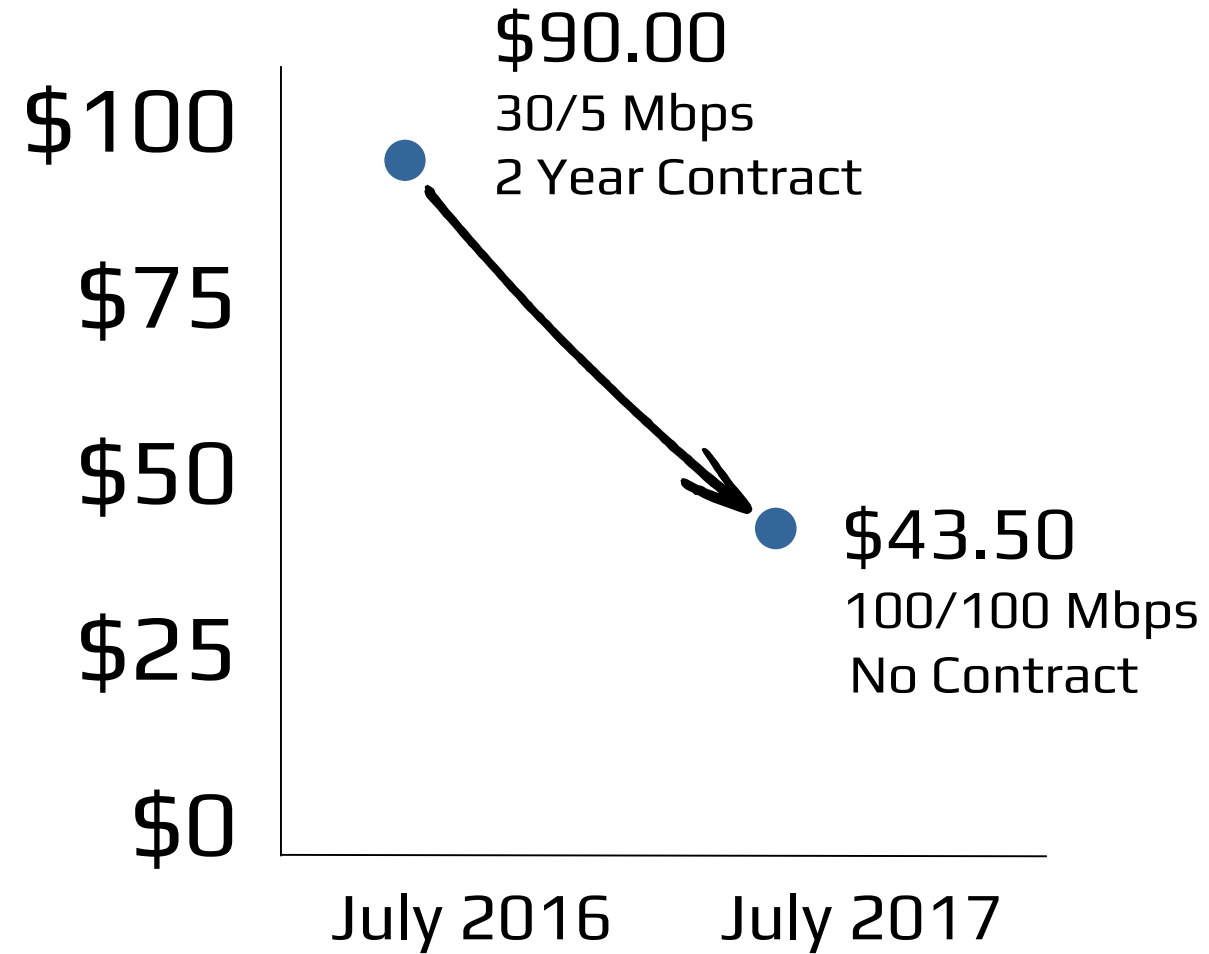


Total Monthly Cost to Subscriber

\$43.49

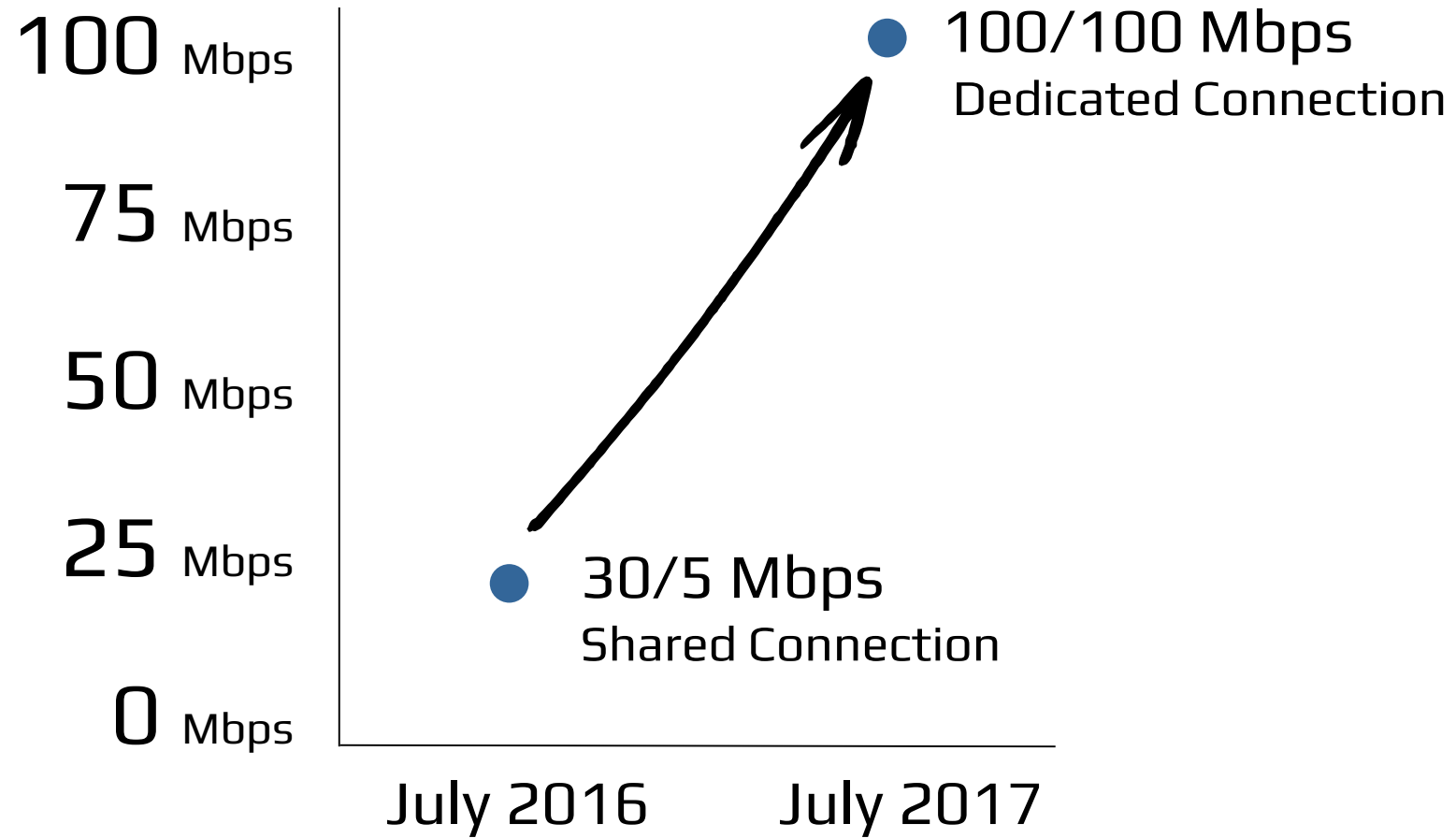


Total Monthly Cost Reduction in Ammon, Idaho





ISP Bandwidth Speeds in Ammon, Idaho



- ➔ The Model Reinforces the Separation of Infrastructure and Services
- ➔ Lit Fiber Network Infrastructure is Organized as a Utility
- ➔ Service are NOT Part of the Utility
- ➔ The Model is Much Lower Risk for the Municipality (Financial and Political)

The Model is Sustainable Because...

- ➔ Success is not dependent on take rates
- ➔ Subscriber's become partners with city
- ➔ Success of the municipal network is not dependent upon the success of services

Is Broadband Essential Infrastructure?

Communication is not just a sector of the economy. Communication **is** the economy.

– Kevin Kelly, *New Rules to a New Economy*

If this is true... Why would Farmington place your economic future in the hands of a few private companies whose interests are not aligned with the interests of the City and its residence?



The End

Thank You

