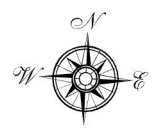


**SOURCES:** City of Farmington Hills, GIS 2024  
 Department of Planning and Community Development, 2024  
 Oakland County, 2024  
 Map Print Date: February 2024

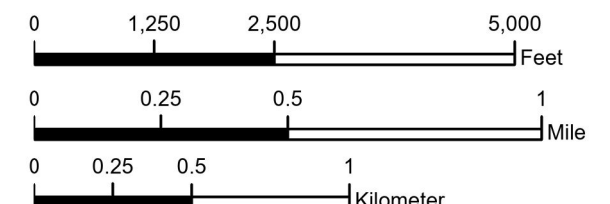
# Zoning Districts

City of Farmington Hills, Michigan



Zoning Districts	
	B-1 Local Business District
	B-2 Community Business District
	B-3 General Business District
	B-4 Planned General Business District
	ES Expressway Service District
	FRW-1 Freeway Overlay District
	FRW-2 Freeway Overlay District
	FRW-3 Freeway Overlay District
	GR-1 Grand River Overlay District
	IRO Industrial Research Office District
	LI-1 Light Industrial District
	MH Mobile Home District
	OS-1 Office Service District
	OS-2 Planned Office Service District
	OS-3 Special Office District
	OS-4 Office Research District
	P-1 Vehicular Parking District
	RA-1 One Family Residential District
	RA-1A One Family Residential District
	RA-1B One Family Residential District
	RA-2 One Family Residential District
	RA-2B One Family Residential District
	RA-3 One Family Residential District
	RA-4 One Family Residential District
	RC-1 Multiple Family Residential
	RC-2 Multiple Family Residential
	RC-3 Multiple Family Residential
	RP-1 Planned Residential District
	RP-2 Planned Residential District
	SP-1 Special Purpose District
	SP-2 Special Purpose District
	SP-3 Special Purpose District
	SP-4 Special Purpose District
	SP-5 Special Purpose District

Lot Size for One Family Residential Zones (See Chapter XXI)	
RA-1A	33,000 Sq. Ft. Minimum Average Lot Size per Subdivision 29,700 Sq. Ft. Smallest Lot Allowed
RA-1B	26,000 Sq. Ft. Minimum Average Lot Size per Subdivision 23,400 Sq. Ft. Smallest Lot Allowed
RA-2B	26,000 Sq. Ft. Minimum Average Lot Size per Subdivision 23,400 Sq. Ft. Smallest Lot Allowed
RA-1	20,000 Sq. Ft. Minimum Average Lot Size per Subdivision 18,000 Sq. Ft. Smallest Lot Allowed
RA-2	16,500 Sq. Ft. Minimum Average Lot Size per Subdivision 15,000 Sq. Ft. Smallest Lot Allowed
RA-3	12,500 Sq. Ft. Minimum Average Lot Size per Subdivision 10,000 Sq. Ft. Smallest Lot Allowed
RA-4	8,500 Sq. Ft. Smallest Lot Allowed



**SOURCES:** City of Farmington Hills GIS, 2024  
 Department of Planning and Community Development  
 Effective: February 18, 1985 As Amended to:

June 7, 1998	May 14, 2012	February 12, 2024
February 18, 2001	June 11, 2012	
April 1, 2003	July 22, 2013	
March 7, 2005	August 25, 2014	
October 17, 2005	March 16, 2015	
August 28, 2006	March 23, 2015	
February 26, 2007	February 13, 2017	
March 17, 2008	August 28, 2017	
October 13, 2008	September 17, 2018	
April 13, 2009	March 11, 2019	
July 13, 2009	January 11, 2021	
April 11, 2011	June 28, 2021	
August 8, 2011	June 12, 2023	

**DISCLAIMER:** Although the information provided by this map is believed to be reliable, its accuracy is not warranted in any way. The City of Farmington Hills assumes no liability for any claims arising from the use of this map.  
 Note: See Official Zoning District map maintained by the Farmington Hills City Clerk