



Date goes here

Dear Customer:

Trees are a beautiful and vital part of Michigan's landscape. They're also the leading cause of power outages and can pose a serious public safety hazard if they grow too near or into power lines. That's why our tree experts will be visiting your area soon to trim and, if necessary, remove trees growing too close to power lines.

Our tree trimming program follows industry standards and uses trimming methods that promote healthy trees and safe, reliable power. All work will be completed by tree professionals who have been trained on safe, proper and environmentally responsible work practices. Get a full view of DTE's tree trimming program at dteenergy.com/treecare.

We are committed to working with you throughout this process, and will be here to address any concerns you might have before tree work begins. Here's what you can expect in the upcoming weeks:

- **You may see DTE representatives in your yard or neighborhood inspecting the power lines and trees to determine where trimming is needed. Representatives will be wearing high-visibility vests and carrying DTE ID badges.**
- **If tree work is needed on your property, the representative will knock on your door. If you are not home, we will leave a "Tree Work Scheduled" door card. If you have questions about the work intended for your property, please call the number on the door card.**
- **If a tree poses a serious hazard to power lines or if trimming will put the tree's health at risk, we may need to remove it. In this case, representatives will leave behind additional information and make considerable attempts to work directly with the property owner before removing any trees.**

We appreciate your support as we work to provide you with safe, reliable and affordable energy.

Questions?

If you have any tree-trimming questions or comments, please call 800.477.4747 to speak with a DTE representative.

Sincerely,

DTE's Tree Trimming Team

P.S. Thinking about planting a tree? Support a safe and reliable energy grid by planting powerline-friendly trees. Get free advice on where and what to plant at dteenergy.com/treecare.



DTE Energy Work Authorization

Trees are the leading cause of power outages and can create serious – sometimes deadly – safety hazards across the energy grid. We've identified a tree that needs to be removed to allow us to deliver safe, reliable energy to you and your neighbors, and to keep rates for you and our other customers across southeastern Michigan. **Our experts determined trimming this tree will likely damage the tree's health and strength.**

Please complete the form below and attach it to your front door; one of our crews will pick it up. If we cannot retrieve a signed removal agreement, we'll need to trim the tree extensively to promote electric reliability and public safety near your property. Don't hesitate to contact your DTE representative – listed below – if you have any questions or if you'd like additional information about our tree-trimming process.

Address _____

City _____ Zip _____

Description of tree(s) to be removed:

Total _____

Property Owner Section

Prior Notice? _____

Authorization notes _____

I, the undersigned, own the property described on this card and agree that the DTE Electric Company, or its agent(s), may complete the previously described vegetation maintenance, and I have the right to agree to maintenance for the property. I understand the field will apply an herbicide to prevent stump regrowth.



Tree Work Scheduled

Date: _____

DTE customer,

Trees are the leading cause of power outages and can create dangerous safety hazards across the energy grid. To ensure you and your family's safety, we've identified a tree that needs to be trimmed or removed. This will better allow us to deliver safe, reliable energy to you and your neighbors. Here's more info:

- Tree Trimming** – No action is required. More info is included on the back of this piece.
- Tree Removal** – Trees recommended for removal are marked with two white dots near their bases. We would like to discuss this work with you before we begin. *Please read and complete the "Tree Removal Agreement" provided.*

Other: _____

Our tree-trimming program is aligned with industry best practices, and our team is committed to striking the delicate balance between safe, affordable and reliable energy. There is no charge for this service.

Questions or concerns? We're here to help. Contact your DTE representative as soon as possible to ensure we're able to speak with you before work begins:

DTE representative _____ Phone _____



Improving Electric Reliability

Recently trimmed areas have seen electric reliability improve by an average of 70 percent.



What to Expect

How We Trim

Crews will trim a radius of approximately 15 feet around DTE electrical equipment.

Debris Policy

- **Debris we'll remove:** small branches and limbs.
- **Debris we'll leave behind:** larger pieces of wood (cut to firewood length); dead or diseased wood or debris; trees and/or limbs that fell due to natural causes.

Please note: we do not remove dead or diseased vegetation to prevent the spread of tree diseases.

Service drops

Your service drop – the power line that runs from the electric pole near your property to your house – is your personal connection to the energy grid. Keeping vegetation away from your service drop to prevent outages and safety hazards is your responsibility.

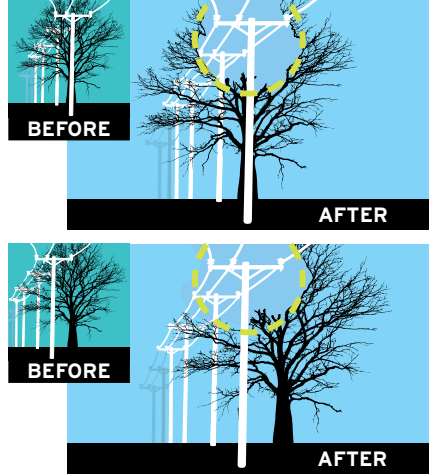
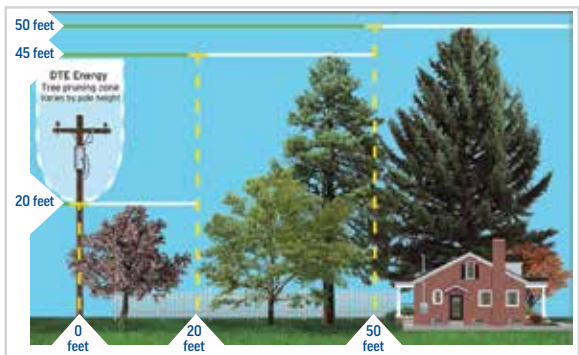
Since service drops are energized and extremely dangerous, we highly recommend you use a professional tree-trimming service to remove or maintain any vegetation that's in contact – or may come into contact – with it.

Safety

Trees and the energy grid don't mix, and when combined, can create potentially dangerous safety hazards. To keep your family safe, do not trim, work near or climb on trees near power lines, or on trees with power lines nearby.

Right Tree, Right Place

The secret to having strong, beautiful trees and reliable electric service is planting the right trees in the right places. Consult the planting guide at dteenergy.com/treecare for more information.



Learn more at dteenergy.com/treecare



We were here...

Date _____

Dear Customer:

A DTE Energy contract tree crew has completed the tree trimming work on your property. DTE contracts all its tree trimming work to professional tree trimming services. Woody debris may have been left on your property in accordance with the utilities debris policy (indicated below):

- Caused by mother nature:** Trees or limbs that fall due to natural causes are the customer's responsibility for removal. If vegetation is interfering with DTE equipment, we will clear it and leave all woody debris from the damaged tree.
- Wood left from utility work:** Any large wood will be cut into manageable lengths and piled on the property for customer disposal. Small branches have been chipped and removed.
- Excess debris from utility work:** We were unable to remove small debris at the time of work completion. We will return as soon as possible to chip the rest of the debris. Large wood will be cut into manageable lengths and piled on the property for customer disposal.
- Dead or diseased wood:** In order to reduce the spread of forest pests and diseases, previously dead or diseased wood will be left on site. Large wood will be cut into manageable lengths and piled on the property for customer disposal.

If you have a question or concern regarding the work completed on your property, please contact:

Contact Name

Phone Number

Crew Number

If you would like to learn more about DTE Energy's Tree Trim Program and how it plays a key role in reducing power outages, please visit: dteenergy.com/treecare.

Thank you for contacting us about the need for tree trimming on your property.